

SANTANDER 2014 ISAF SAILING WORLD CHAMPIONSHIPS

8 – 21 September 2014

SAILING INSTRUCTIONS

[DP] denotes a rule for which the penalty is at the discretion of the International Jury.

[NP] denotes that a breach of this rule will not be grounds for a protest by a boat.

[SP] denotes a rule for which a standard penalty may be applied by the race committee without a hearing”

1. RULES

- 1.1 The regatta will be governed by the rules as defined in *The 2013-2016 Racing Rules of Sailing* (RRS).
- 1.2 No national authority prescriptions will apply.
- 1.3 Decisions of the International Jury will be final as provided in RRS 70.5.
- 1.4 If there is a conflict between languages the English text will take precedence.
- 1.5 Appendix P, Special Procedures for Rule 42, will apply.
- 1.6 For the Men's Skiff, Women's Skiff and Mixed Two Person Multihull, RRS 44.1 and RRS P2.1 are changed so that the Two-Turns Penalty is replaced by the One-Turn Penalty.
- 1.7 For medal races, ISAF Addendum Q, *Umpired Fleet Racing*, will apply and takes precedence over any conflicting instructions.
- 1.8 The Santander 2014 ISAF Sailing World Championships Equipment Regulations will apply.
- 1.9 The Santander 2014 ISAF Sailing World Championships Coach Boat Regulations will apply.
- 1.10 The Santander 2014 ISAF Sailing World Championships Athlete Media Guide will apply.

2. SAFETY REGULATIONS [DP] [NP]

- 2.1 The race committee will protest a boat for a breach of these safety regulations.
- 2.2 Competitors are advised to wear personal flotation devices at all times while afloat, except briefly while changing or adjusting clothing or personal equipment.
- 2.3 Boats not leaving the harbour for a scheduled race shall promptly notify the Race Office.
- 2.4 Check-out and check-in Ashore. [SP]
 - 2.4.1 Before leaving to race on each scheduled racing day, a crew shall personally checkout by collecting their tally in exchange for their accreditation card, which is then left ashore.
 - 2.4.2 Within the protest time limit, a crew shall personally check-in by returning the tally to the tally control station in exchange for their accreditation cards.
 - 2.4.3 Tallies shall be worn visibly, over clothing, on the right wrist by both helm and crew while afloat.
 - 2.4.4 The Tally control station will be located close to the launching ramp at the boat parking.

- 2.5 Within 15 minutes after returning ashore, a crew shall personally sign in on the required form. [SP]
- 2.6 A boat that retires from racing shall notify the race committee before leaving the racing area, or if that is not possible, shall notify the race office as soon as possible after returning ashore.
- 2.7 Boats retiring from racing in accordance with SI 2.6 shall complete a retirement declaration form at the race office within the protest time limit.
- 2.8 In accordance with NoR 15, Berthing, boats shall return to and remain in their assigned berths.
- 2.9 Boats shall avoid commercial traffic and shall cross shipping channels at right angles only. Boats not racing shall remain clear of boats that are racing and official boats.
- 2.10 When the race committee displays flag V with repetitive sounds, all official and support boats shall monitor VHF channel 71 for search and rescue instructions.
- 2.11 Additional Safety Information
In case of emergency the Santander Port Control can be contacted on VHF channel 16, 11 & 74 or by phone on (+34) 942213030.

3. CODE OF CONDUCT [DP]

- 3.1 Competitors shall comply with any reasonable request from a regatta official.
- 3.2 Competitors shall handle any boats or equipment provided by the organizing authority with proper care and seamanship, and in compliance with any written instructions.

4. COMMUNICATIONS WITH COMPETITORS

- 4.1 Notices to competitors will be posted at the official notice board located at the entrance to the Nautica Building.
- 4.2 Notices will also be repeated in the San Martin boat park and the Beach boat park. Failure to post a notice at these locations will not be grounds for redress. This changes RRS 62.
- 4.3 Notices will also be posted on the <http://www.santander2014.com/> and may be posted at other locations specified in SI Addendum D. Failure to post a notice at these other locations will not be grounds for redress. This changes RRS 62.
- 4.4 When a visual signal is displayed over an area, event or fleet flag, the signal applies only to that area, event or fleet. This changes the Race Signals preamble.
- 4.5 Signals ashore will be displayed at the flagpole located in each of the boat parks
- 4.6 When flag AP is displayed ashore, '1 minute' is replaced with 'not less than 'not less than the minutes' shown in the table below. In the race signal AP.
- 4.7 Boats shall not leave the shore until Flag D is displayed ashore. [DP] The warning signal will be made not less than as in the table at the table below

Event	Freixenet	Telefónica	HP	Ssangyong	ENDESA	Duna	Murimar	Langre
Men´s Windsurfing	45	45	45	30	30	15	55	55
Women´s Windsurfing	45	45	45	30	30	15	55	55
Men´s One Person Dinghy	45	60	60	30	30	15	75	75
Women´s One Person Dinghy	45	60	60	30	30	15	75	75
Men´s One Person Dinghy (heavyweight)	45	60	60	30	30	15	75	75
Men´s Two Person Dinghy	45	45	45	30	30	15	60	60
Women´s Two Person Dinghy	45	45	45	30	30	15	60	60
Men's Skiff	45	45	45	20	20	15	55	55
Women´s Skiff	45	45	45	20	20	15	55	55
Mixed Multihull	45	45	45	30	30	15	55	55

4.8 When flag Y is displayed ashore, RRS 40 applies at all times while afloat. This changes the Part 4 preamble.

5. CHANGES TO SAILING INSTRUCTIONS

5.1 Any change to the format or schedule of races will be posted by 2000 on the day before it will take effect and any change to the sailing instructions will be posted by 1000 on the day it will take effect.

5.2 Any reassignment of events or fleets to course areas will be posted by 1000 on the day it will take effect, however:

5.2.1 when flag AP is displayed ashore, 30 minutes before flag AP for that class or fleet is removed; or

5.2.2 when flag AP is displayed afloat, the course area may be changed. The Race Committee signal boat will display flag L over the event(s) flag and move to the new Course Area.

5.3 Any change to the sailing instructions will be approved by the Principal Race Officer and the ISAF Technical Delegate.

6. FORMAT OF RACING

6.1 The format for each event consists of an opening series and a Medal Race. If the event is split into fleets, the opening series will be divided into a qualifying series and a final series.

6.2 Qualifying series

6.2.1 Boats will be assigned to yellow, blue (and red when needed) fleets of, as nearly as possible, equal size and ability. Initial assignments will be made by a seeding

committee appointed by the race committee. Those assignments will be posted by 2100 on the day before the first scheduled race for each event.

- 6.2.2 Boats will be reassigned to fleets after each day of racing, except if on the first day fewer than two races are completed by all fleets. If all fleets have completed the same number of races, boats will be reassigned on the basis of their ranks in the series. If all fleets have not completed the same number of races, the series scores for reassignment will be calculated for those races, numbered in order of completion, completed by all fleets. For three fleets, and similarly for any other number, reassignments will be made as follows:

Rank in series	Fleet assignment
First	Yellow
Second	Blue
Third	Red
Fourth	Red
Fifth	Blue
Sixth	Yellow
Seventh	Yellow
Eighth	Blue

and so on. If two or more boats have the same rank, they will be entered in the left column in the order of fleets in SI 6.2.1.

- 6.2.3 Assignments will be based on the ranking available at 2100 that day regardless of protests or requests for redress not yet decided.
- 6.2.4 If all fleets have not completed the same number of races by the end of a day, the fleets with fewer races will continue racing the following day until all fleets have completed the same number of races. All boats will thereafter race in the new fleets.

6.3 Final series:

- 6.3.1 A final series will be scheduled for the Men's One Person Dinghy, Women's One Person Dinghy, Men's Two Person Dinghy, Women's Two Person Dinghy and Men's One Person Dinghy (Heavyweight) events with 4 or more qualifying series races completed. A final series will be scheduled for the Men's Windsurfer, Women's Windsurfer, Men's Skiff, Women's Skiff and Mixed Multihull events with 5 or more qualifying series races completed.

- 6.3.2 Boats will be assigned to the gold, silver (and bronze when needed) fleets on the basis of their ranks in the qualifying series. The gold fleets will have the number of boats shown in Addendum D. The final-series fleets will have, as nearly as possible, equal size but none larger than the gold fleet. Boats with the best qualifying-series ranks will race all final-series races in the gold fleet, boats with the next-best qualifying-series ranks will race in the silver fleet, etc.

- 6.3.3 Any recalculation of final series ranking after boats have been assigned to gold fleets will not affect the assignments except that a redress decision may promote a boat to a higher fleet.

6.4 Medal Race

- 6.4.1 A Medal Race will be scheduled for each event with 6 or more opening series races completed.
- 6.4.2 Assignments to a Medal Race will be based on the ranking available at 0800 on the day of the Medal Race. The protest committee may extend the time limit.

6.5 The number of fleets, number of races, races per day, and the types of races are shown in SI Addendum D.

7. SCHEDULE OF RACES

7.1 The total number of races scheduled is shown in SI Addendum D.

7.2 The daily race schedule and the scheduled time of the warning signal for the first race are shown in SI Addendum C.

7.3 Races not sailed on the scheduled day may be sailed on a following day at the discretion of the race committee.

7.4 For split fleet events, the qualifying series will be extended if less than four or five races have been completed according to SI 6.3.1

7.5 The warning signal for each succeeding race will be made as soon as practicable.

7.6 To alert boats that a race or sequence of races will begin soon, the orange starting line flag will be displayed with one sound at least five minutes before a warning signal is made.

7.7 On the last scheduled day of racing for each event, no warning signal will be made after 1700.

8. SPARE

9. SPARE

10. COURSE AREAS

10.1 The course areas are shown in SI Addendum A.

10.2 Events are assigned to course areas as stated in SI Addendum C.

10.3 For the medal races the locations will be posted on the official notice board in accordance with SI 5.1.

11. THE COURSES

The diagrams in SI Addendum B show the courses, the course designations, the approximate angles between legs, the order in which marks are to be passed, and the side on which each mark is to be left.

12. MARKS

12.1 Marks 1, 2, 3, and 4, offset, or associated gate marks, will be as follows:

<u>Course Area</u>	<u>Marks 1, 2, 3, 4, offset</u>	<u>New Mark</u>
Murimar	Yellow, tetrahedral	Black, tetrahedral
Telefónica	Orange, tetrahedral	Black, tetrahedral
Freixenet	Yellow, "cork" shape	Black, tetrahedral
Langre	Orange, tetrahedral	Black, tetrahedral
HP	Yellow, tetrahedral	Black, tetrahedral
SSANGYONG	Orange, tetrahedral	Black, tetrahedral
Duna	White, tetrahedral	Black, tetrahedral
ENDESA	Yellow, tetrahedral	Black, tetrahedral

- 12.2 Marks S1, S2, and S3, or associated gates, will be yellow cylindrical.
- 12.3 The starting and finishing line marks will be race committee vessels or inflatable marks.
- 12.4 Inflatable starting and finishing line marks, when used, will be white tetrahedral.

13. CLASS FLAGS

Class flags will be class insignia on the following background:

<u>Event</u>	<u>Class Insignia</u>	<u>Background Colour</u>
Men's Windsurfing	RS:X	White
Women's Windsurfing	RS:X	Light Blue
Men's One Person Dinghy	Laser Standard	White
Women's One Person Dinghy	Laser Radial	Light Blue
Men's One Person Dinghy (Heavyweight)	Finn	White
Men's Skiff	49er	White
Women's Skiff	49er FX	Light Blue
Men's Two Person Dinghy	470	White
Women's Two Person Dinghy	470	Light Blue
Mixed Multihull	Nacra	White

14. THE START

- 14.1 The starting line will be between a staff displaying an orange flag on the race committee vessel at the starboard end and either
 - 14.1.1 the course side of the port-end inflatable starting mark, or
 - 14.1.2 a staff displaying an orange flag on the race committee vessel at the port end.
- 14.2 A buoy may be attached to the race committee starting boat anchor line just below keel depth. Boats shall not pass between this buoy and the race committee starting boat at any time. This buoy is part of the race committee starting boat ground tackle. [DP]
- 14.3 When a starting sequence is in progress, boats whose warning signal has not been made shall avoid the starting area. The starting area is defined as a rectangle 50 meters from the starting line and marks in all directions. [DP]
- 14.4 If flag U has been displayed as the preparatory signal, no part of a boat's hull, crew or equipment shall be in the triangle formed by the ends of the starting line and the first mark during the last minute before her starting signal. If a boat breaks this rule and is identified, she shall be disqualified without a hearing but not if the race is restarted or re-sailed or postponed or abandoned before the starting signal. This changes RRS 26 and A5. When flag U is used as the preparatory signal, RRS 29.1 does not apply. The scoring abbreviation for a flag U penalty is UFD. This changes RRS A11.

15. COURSE CHANGES

- 15.1 To change the next leg of the course, the race committee will (a) lay a new mark, (b) move the finishing line, or (c) move the leeward gate. When a new mark is laid, the original mark

will be removed as soon as possible. When in a subsequent change a new mark is replaced, it will be replaced by an original mark.

15.2 Courses will not be shortened. This changes RRS 32.

16. THE FINISH

The finishing line will be between a staff displaying an orange flag on the race committee vessel and either:

16.1.1 the course side of the nearby inflatable finishing mark, or

16.1.2 a staff displaying an orange flag on the nearby race committee vessel.

17. TIME LIMITS AND TARGET TIMES

17.1 For opening series, time limits and target times in minutes are as follows:

Class	Time Limit	Mark 1 Time Limit	Finish Window	Target Time
Men's Windsurfer	45	20	10	20-25
Women's Windsurfer	45	20	10	20-25
Men's One Person Dinghy	75	25	15	50
Women's One Person Dinghy	75	25	15	50
Men's One Person Dinghy (Heavyweight)	75	25	15	50
Men's Two Person Dinghy	75	25	15	50
Women's Two Person Dinghy	75	25	15	50
Men's Skiff	50	20	10	30
Women's Skiff	50	20	10	30
Mixed Multihull	50	20	10	30

17.2 For medal race series, time limits and target times in minutes are as follows:

Class	Time Limit	Mark 1 Time Limit	Finish Window	Target Time
Men's Windsurfer	20	None	5	20
Women's Windsurfer	20	None	5	20
Men's One Person Dinghy	40	10	10	25
Women's One Person Dinghy	40	10	10	25
Men's One Person Dinghy (Heavyweight)	40	10	10	25
Men's Two Person Dinghy	40	10	10	25
Women's Two Person Dinghy	40	10	10	25
Men's Skiff	20	None	5	20
Women's Skiff	20	None	5	20
Mixed Multihull	20	None	5	20

- 17.3 If no boat has passed Mark 1 within the Mark 1 Time Limit the race will be abandoned.
- 17.4 Boats failing to finish within the time stated in the Finish Window after the first boat sails the course and finishes will be scored Did Not Finish. This changes RRS 35, A4 and A5.

18. SPARE

19. SPARE

20. EQUIPMENT AND MEASUREMENT CHECKS [DP]

Equipment inspection and equipment substitution will be conducted in accordance with the Santander 2014 ISAF Sailing World Championships Equipment Regulations (ER).

21. REPLACEMENT OF CREW [DP]

Substitution of competitors will not be allowed without prior written approval of the race committee and shall comply with any restrictions in the Notice of Race.

22. OFFICIAL BOATS

22.1 Official boats will be marked as follows:

Equipment Inspection	Flag with white background, letter "M"
First aid/Medical	Black flag
Jury/Judges	Flag with white background, letter "J"
TV	Blue and Yellow flag
General media	Flag with white background, S14 logo
Organizers / VIP	Pink & Green flag
Race Committee	White, Yellow, Green, Pink, Red, Blue or Purple flags
Rescue or Course Marshals	Black flag
ISAF	Flag with white background, ISAF logo in blue
PRO	Flag with white background, letters "PRO"
Swiss Timing	Flag with white background, letters "ST"

- 22.2 Actions by official boats or helicopters shall not be grounds for requesting redress by a boat. This changes RRS 60.1(b).

23. SUPPORT AND SPECTATOR BOATS [DP] [NP]

- 23.1 The Santander 2014 ISAF Worlds Coach Boat Regulations (CBR) shall apply to all support boats.
- 23.2 The Santander 2014 ISAF Worlds Coach Boat Regulations shall also apply to spectator boats.

24. IDENTIFICATION AND ADVERTISING WHILE RACING [DP] [NP]

- 24.1 Each day, the first, second and third boats in series ranking at the beginning of the day shall display a yellow, blue and red bib on the crew respectively. In addition, the organizing

authority shall require a coloured dot to be applied to the mainsail. The organizing authority will supply the bibs and coloured dots, and instructions for their use.

- 24.2 Boats shall display bow numbers. The organizing authority will supply the numbers and instructions for their use. The bow numbers will be based on the ISAF Rankings published on 28 July 2014.
- 24.3 Boats shall display required event sponsor advertising. The organizing authority will supply the advertising and instructions for their use.
- 24.4 For split fleet events, boats shall display a coloured band or ribbon corresponding to the fleet to which she has been assigned. The organizing authority will supply the bands or ribbons and instructions for their use.
- 24.5 In accordance with RRS Appendix G3 a boat may carry the sail numbers of a boat owned by them on a boat chartered or loaned for the event.

25. SCORING

- 25.1 The Low Point System of RRS Appendix A will apply. RRS B8 is deleted.
- 25.2 When fewer than three opening series races have been completed, a boat's series score will be the total of her race scores. When three or more opening series races have been completed, a boat's score will be the total of her race scores excluding her worst score. However, the score from any Medal Race will not be excluded.
- 25.3 A boat starting later than 4 minutes after her starting signal will be scored Did Not Start. This changes RRS A4 and A5.
- 25.4 RRS A4.2 is changed so that those scores are based on:
 - 25.4.1 The number of boats assigned to compete in a single fleet series, or
 - 25.4.2 The number of boats assigned to the largest fleet in a split fleet qualification series, or
 - 25.4.3 The number of boats assigned to the relevant fleet in the final series or medal race.
- 25.5 One race is required to be completed constitute a regatta.
- 25.6 Six races are required to be completed to constitute an opening series.
- 25.7 If at the end of a split fleet qualifying series some boats have more race scores than others, scores for the most recent races will be excluded so that all boats have the same number of race scores.
- 25.8 Final series fleets will be scored separately and different final series fleets need not have completed the same number of final races
- 25.9 For the Medal Race RRS A4.1 is changed so that the points are doubled. RRS A4.2 is changed so that the scores are based on the number of boats assigned in that race and then doubled.
- 25.10 For boats assigned to compete in the medal race, ties will be broken by the Medal Race score. This changes RRS A8. For tied boats with the same points score in the Medal Race, ties will be broken applying RRS A8 to the opening series scores.
- 25.11 The boats competing in the medal race shall be ranked highest in the regatta. The boats competing in the gold fleet shall be ranked higher in the regatta than boats competing in the silver fleet, and so on. This may not apply to a boat disqualified under RRS 5 or 69.
- 25.12 A boat assigned to compete in the Medal Race shall make a genuine effort to start, sail the course and finish. The penalty for a breach of this instruction will be ranking the boat tenth

in the regatta. If there are two such boats, they will be ranked ninth and tenth, in order of their opening-series ranks, and so on. This changes RRS A2.

- 25.13 Ties in a final series (gold, silver, etc.) are broken in accordance with RRS A8.2 only. All other series ties shall be broken in accordance with RRS A8.
- 25.14 To request correction of an alleged error in posted race or series results, a boat may complete a scoring enquiry form available at the race office.

26. PROTESTS, PENALTIES AND REQUESTS FOR REDRESS

- 26.1 Protest forms are available at the race office, located at Nautica Building and at the San Martin and Beach boat park offices. Protests and requests for redress or reopening shall be delivered to the race office located at the Nautica Building only within the appropriate time limit.
- 26.2 For each fleet, the protest time limit is 90 minutes after the last boat has finished the last race of the day except for on the Duna and ENDESA course areas where the protest time limit is 60 minutes.
- 26.3 Notices will be posted within 30 minutes of the protest time limit to inform competitors of hearings in which they are parties or named as witnesses. Hearings will be held in the protest room, located at in the Nautica Building beginning at the time posted. Hearings may be scheduled to begin up to 30 minutes before the end of protest time.
- 26.4 Notices of protests by the race committee or protest committee will be posted to inform boats under RRS 61.1(b).
- 26.5 A list of boats that have been penalized under Appendix P for breaking RRS 42 and under SI 26.8 will be posted.
- 26.6 Penalties for breaches of NoR 2.4 (National Flags), NoR 15 (Berthing), NoR 20 (Insurance) the ER, CBR, class rules, or rules in the NoR and SIs marked [DP], are at the discretion of the protest committee. A boat may accept a discretionary penalty before a hearing concerning the same incident by completing a form available at the jury office.
- 26.7 Breaches NoR 20 (Insurance) and of rules in the SIs marked [NP] will not be grounds for a protest by a boat. This changes RRS 60.1(a).
- 26.8 For breaches of NoR 2.4 (National Flags) and the SIs marked [SP], the race committee may apply a standard penalty without a hearing. A list of these breaches and the associated standard penalties will be posted on the Official Notice Board. However, the race committee may protest a boat when they consider the standard penalty to be inappropriate. This changes RRS 63.1 and Appendix A5.
- 26.9 On the last day of the qualifying series, opening series, or on the last scheduled day of racing, a request for reopening a hearing shall be delivered:
- 26.9.1 within the protest time limit if the requesting party was informed of the decision on the previous day;
- 26.9.2 no later than 30 minutes after the requesting party was informed of the decision on that day; his changes RRS 66.
- 26.10 On the last day of the qualifying series or opening series, or on the last scheduled day of racing, a request for redress based on a protest decision shall be delivered no later than 30 minutes after the decision was posted. This changes RRS 62.2.

27. RADIO COMMUNICATIONS [DP]

A boat shall neither make radio transmissions while racing nor receive radio communications not available to all boats, except in an emergency or when using equipment provided by the race committee. This restriction also applies to mobile telephones.

28. TRASH DISPOSAL [DP]

As sailors, we seek to protect and restore our oceans and coastal waters. See RRS 55. Boats shall not intentionally put trash in the water. Trash may be placed aboard support and race committee boats.

29. PRIZES

- 29.1 Medals will be awarded to the top 3 boats in each event.
- 29.2 The IOC President's Cup will be presented to the best overall nation as per NoR 17.
- 29.3 The Finn Gold Cup will be awarded to the top boat in the Men's One Person Dinghy (Heavyweight) event.
- 29.4 Additional Olympic Classes trophies may be awarded.

30. TRACKING EQUIPMENT [DP][SP]

30.1 Before Competition/before Racing

A tracking socket will be supplied to all competitors competing in a gold fleet or medal race from their assigned tracking desk once their assignment to the gold fleet or medal race is known. Competitors shall securely mount the socket to their boat as per the supplied instructions. Competitors shall collect a tracking module from their assigned tracking desk, which must be securely fitted to the tracking socket before racing each day. The tracking desks will be located in the CEAR, San Martin and Beach boat parks.

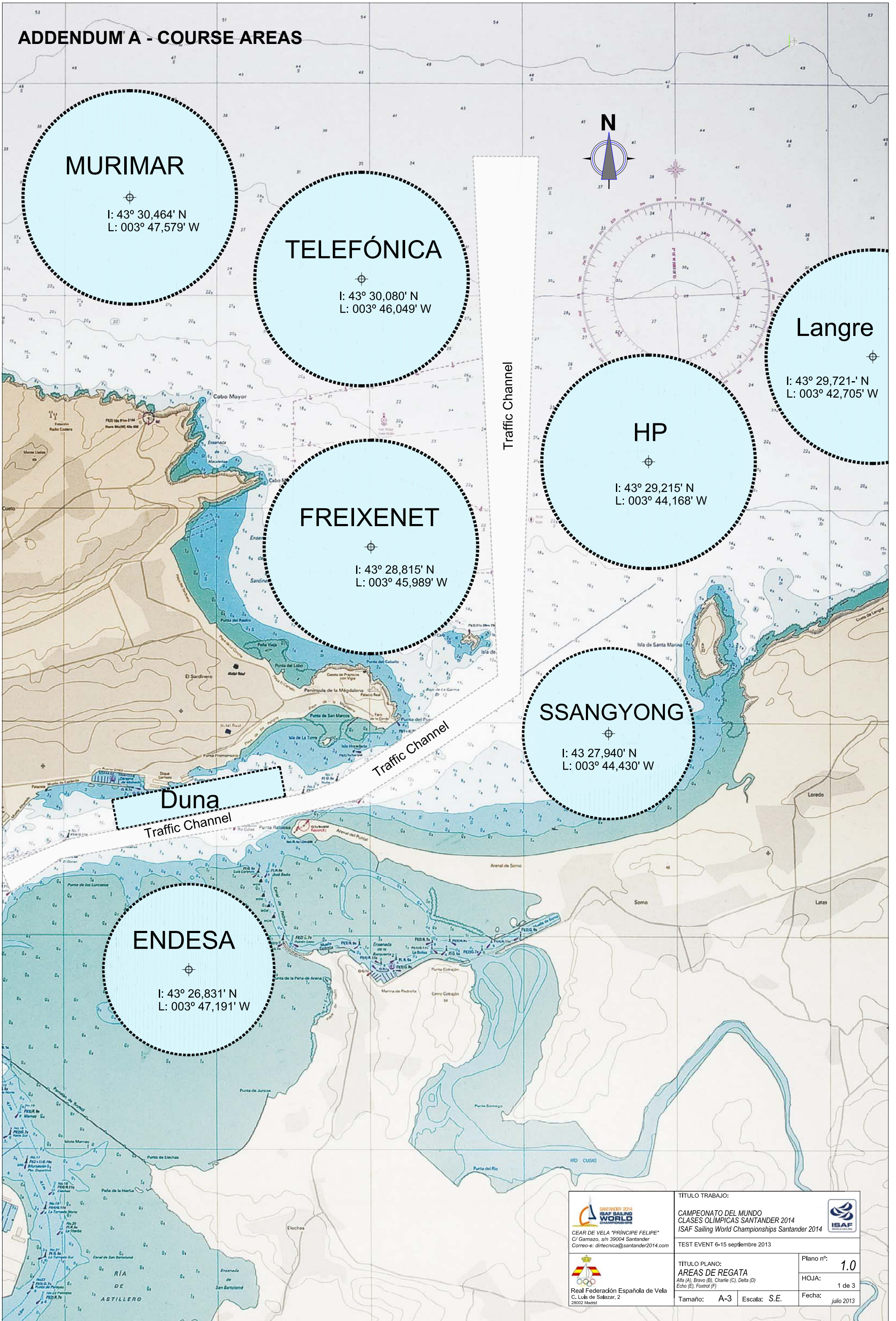
30.2 Return to Shore

Competitors shall return the tracking module within the protest time limit to the same place that they received it.

31. ATHLETE MEDIA GUIDE [DP][NP]

The Santander 2014 ISAF Worlds Athlete Media Guide (AMG) shall apply

ADDENDUM A - COURSE AREAS



MURIMAR

I: 43° 30,464' N
L: 003° 47,579' W

TELEFÓNICA

I: 43° 30,080' N
L: 003° 46,049' W

FREIXENET

I: 43° 28,815' N
L: 003° 45,989' W

Langre

I: 43° 29,721' N
L: 003° 42,705' W

HP

I: 43° 29,215' N
L: 003° 44,168' W

SSANGYONG

I: 43 27,940' N
L: 003° 44,430' W

ENDESA

I: 43° 26,831' N
L: 003° 47,191' W

Duna

Traffic Channel

Traffic Channel

Traffic Channel


 CEAR DE VELA "PRÍNCIPE FELIPE"
 C/ Gamazo, s/n 39004 Santander
 Correo-e: dirtecnica@santander2014.com

TÍTULO TRABAJO:
 CAMPEONATO DEL MUNDO
 CLASES OLÍMPICAS SANTANDER 2014
 ISAF Sailing World Championships Santander 2014
 TEST EVENT 6-15 septiembre 2013


 Real Federación Española de Vela
 C. Luis de Salazar, 2
 28002 Madrid

TÍTULO PLANO:
 AREAS DE REGATA
 Alfa (A), Bravo (B), Charlie (C), Delta (D)
 Echo (E), Foxtrot (F)

Plano nº:	1.0
HOJA:	1 de 3
Fecha:	julio 2013

Tamaño: A-3 Escala: S.E.

ADDENDUM B – COURSE ILLUSTRATIONS

I

Course: Inner Trapezoid

Signal	Mark Rounding Order
I2	Start - 1 - 4s/4p - 1 - 2 - 3p - Finish
I3	Start - 1 - 4s/4p - 1 - 4s/4p - 1 - 2 - 3p - Finish
I4	Start - 1 - 4s/4p - 1 - 4s/4p - 1 - 4s/4p - 1 - 2 - 3p - Finish

O

Course: Outer Trapezoid

Signal	Mark Rounding Order
O2	Start - 1 - 2 - 3s/3p - 2 - 3p - Finish
O3	Start - 1 - 2 - 3s/3p - 2 - 3s/3p - 2 - 3p - Finish
O4	Start - 1 - 2 - 3s/3p - 2 - 3s/3p - 2 - 3s/3p - 2 - 3p - Finish

IS

Course: Inner Slalom

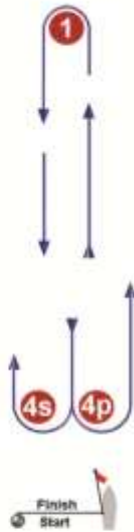
Signal	Mark Rounding Order
IS2	Start - 1 - 4s/4p - 1 - 2 - 3p - S1 - S2 - S3 - Finish
IS3	Start - 1 - 4s/4p - 1 - 4s/4p - 1 - 2 - 3p - S1 - S2 - S3 - Finish
IS4	Start - 1 - 4s/4p - 1 - 4s/4p - 1 - 4s/4p - 1 - 2 - 3p - S1 - S2 - S3 - Finish

OS

Course: Outer Slalom

Signal	Mark Rounding Order
OS2	Start - 1 - 2 - 3s/3p - 2 - 3p - S1 - S2 - S3 - Finish
OS3	Start - 1 - 2 - 3s/3p - 2 - 3s/3p - 2 - 3p - S1 - S2 - S3 - Finish
OS4	Start - 1 - 2 - 3s/3p - 2 - 3s/3p - 2 - 3s/3p - 2 - 3p - S1 - S2 - S3 - Finish

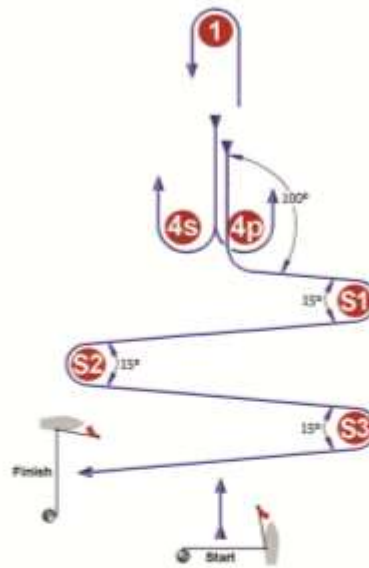
L



Course: Windward/Leeward

Signal	Mark Rounding Order
L2	Start - 1 - 4s/4p - 1 - Finish
L3	Start - 1 - 4s/4p - 1 - 4s/4p - 1 - Finish
L4	Start - 1 - 4s/4p - 1 - 4s/4p - 1 - 4s/4p - 1 - Finish

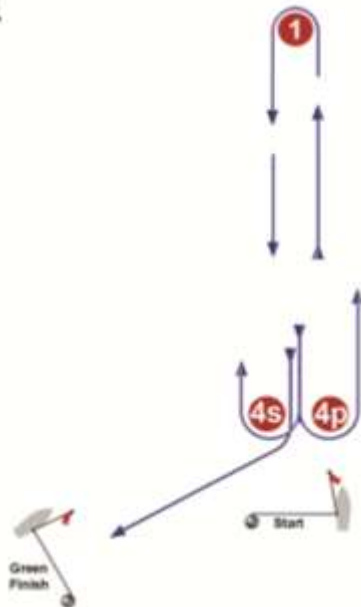
LS



Course: Windward/Leeward With Slalom Finish

Signal	Mark Rounding Order
LS2	Start - 1 - 4s/4p - 1 - 4p - S1 - S2 - S3 - Finish
LS3	Start - 1 - 4s/4p - 1 - 4s/4p - 1 - 4p - S1 - S2 - S3 - Finish
LS4	Start - 1 - 4s/4p - 1 - 4s/4p - 1 - 4s/4p - 1 - 4p - S1 - S2 - S3 - Finish

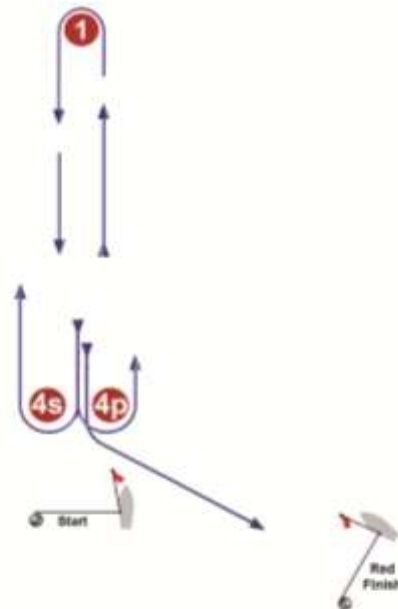
LG



Course: Windward/Leeward

Signal	Mark Rounding Order
LG2	Start - 1 - 4s/4p - 1 - 4s - Finish
LG3	Start - 1 - 4s/4p - 1 - 4s/4p - 1 - 4s - Finish
LG4	Start - 1 - 4s/4p - 1 - 4s/4p - 1 - 4s/4p - 1 - 4s - Finish

LR



Course: Windward/Leeward

Signal	Mark Rounding Order
LR2	Start - 1 - 4s/4p - 1 - 4p - Finish
LR3	Start - 1 - 4s/4p - 1 - 4s/4p - 1 - 4p - Finish
LR4	Start - 1 - 4s/4p - 1 - 4s/4p - 1 - 4s/4p - 1 - 4p - Finish

IA



Course: Same As Course I Except With Offset Mark 1A

Signal	Mark Rounding Order
<u>IA2</u>	Start - 1 - 1a - 4s/4p - 1 - 1a - 2 - 3p - Finish
<u>IA3</u>	Start - 1 - 1a - 4s/4p - 1 - 1a - 4s/4p - 1 - 1a - 2 - 3p - Finish
<u>IA4</u>	Start - 1 - 1a - 4s/4p - 1 - 1a - 4s/4p - 1 - 1a - 4s/4p - 1 - 1a - 2 - 3p - Finish

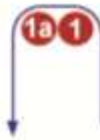
LGA



Course: Same As Course LG Except With Offset Mark 1a

Signal	Mark Rounding Order
<u>LGA2</u>	Start - 1 - 1a - 4s/4p - 1 - 1a - Finish
<u>LGA3</u>	Start - 1 - 1a - 4s/4p - 1 - 1a - 4s/4p - 1 - 1a - Finish
<u>LGA4</u>	Start - 1 - 1a - 4s/4p - 1 - 1a - 4s/4p - 1 - 1a - 4s/4p - 1 - 1a - Finish

LA



Course: Same As Course L Except With Offset Mark 1A

Signal	Mark Rounding Order
<u>LA2</u>	Start - 1 - 1a - 4s/4p - 1 - 1a - Finish
<u>LA3</u>	Start - 1 - 1a - 4s/4p - 1 - 1a - 4s/4p - 1 - 1a - Finish
<u>LA4</u>	Start - 1 - 1a - 4s/4p - 1 - 1a - 4s/4p - 1 - 1a - 4s/4p - 1 - 1a - Finish

LRA



Course: Same As Course LR Except With Offset Mark 1a

Signal	Mark Rounding Order
<u>LRA2</u>	Start - 1 - 1a - 4s/4p - 1 - 1a - Finish
<u>LRA3</u>	Start - 1 - 1a - 4s/4p - 1 - 1a - 4s/4p - 1 - 1a - Finish
<u>LRA4</u>	Start - 1 - 1a - 4s/4p - 1 - 1a - 4s/4p - 1 - 1a - 4s/4p - 1 - 1a - Finish

ADDENDUM C

Date	Course	Murimar	Telefónica	Freixenet	Duna	Endesa	Ssangyong	HP	Langre
12				Laser Yellow x 2 (13:00) Laser Blue x 2 Laser red x 2				Radial Yellow x 2 (13:00) Radial Blue x 2	
	RC Team			Yellow				Green	
13			Radial Yellow x 2 (13:00) Radial Blue x 2	RS X M Yellow x 3 (13:00) RS X M Blue x 3			RS X W Yellow x 3 (13:00) RS X W Blue x 3	Laser Yellow x 2 (13:00) Laser Blue x 2 Laser Red x 2	
	RC Team		Red	Green			White	Yellow	
14		470 M Yellow x 2 (13:00) 470 M Blue x 2	470 W Yellow x 2 (13:00) 470 W Blue x 2	RS X W Yellow x 2 (13:00) RS X W Blue x 2				Laser Gold x 2 (13:00) Radial Gold x 2	Laser Silver x 2 (13:00) Radial Silver x 2 Laser Bronze x 2
	RC Team		White	Pink	Green			Yellow	Red
15		470 W Yellow x 2 (13:00) 470 W Blue x 2	470 M Yellow x 2 (13:00) 470 M Blue x 2	RS X M Gold x 3 (13:00) RS X W Gold x 3 RS X M Silver x 3 (16:00) RS X W Silver x 3	Nacra Yellow x 3 (13:00) Nacra Blue x 3 (15:30)		49er Yellow x 3 (13:00) FX Yellow x 3 (15:30)	49er Blue x 3 (13:00) FX Blue x 3 (15:30)	Finn Yellow x 2 (13:00) Finn Blue x 2
	RC Team		Yellow	White	Green	Pink		Red	Purple
16		470 M Gold x 2 (13:00) 470 W Gold x 2 470 M Silverx2 (16:00) 470 W Silver x 2	Finn Yellow x 2 (13:00) Finn Blue x 2	Nacra Yellow x 2 (13:00) Nacra Blue x 2 (14:45)	FX Yellow x 2 (13:00) 49er Blue x 2 (14:45)		FX Blue x 2 (13:00) 49er Yellow x 2 (14:45)	Radial Gold x 2 (13:00) Laser Gold x 2	Radial Silver x 2 (13:00) Laser Silver x 2 Laser Bronze x 2
	RC Team		White	Blue	Pink	Purple		Red	Yellow
17			Finn Gold x 2 (13:00) Finn Silver x 2	RS X M Gold x 2 (13:00) RS X W Gold x 2	FX Gold x 3 (13:00)	Nacra Gold x 3 (13:00) Nacra Silver x 3 (15:30)	49er Gold x 3 (13:00) 49er Silver x 3 (15:30) 49er Bronze x 3 (17:00)	Laser Gold x 2 (13:00) Radial Gold x 2	Radial Silver x 2 (13:00) Laser Silver x 2 Laser Bronze x 2
	RC Team		Blue	Green	Purple	Pink		Red	Yellow
18			470 M Silver x 2 (13:00) 470 W Silver x 2	RS X W Gold x 2 (13:00) RS X M Gold x 2	Radial MR (14:15) Laser MR(15:15)		RS X W Silver x 2 (13:00) RS X M Silver x 2	470 M Gold x 2 (13:00) 470 W Gold x 2	
	RC Team		Pink	Green	Yellow		Red	White	
19		470 M Silver x 2 (13:00) 470 W Silver x 2	470 M Gold x 2 (13:00) 470 W Gold x 2	Finn Gold x 2 (13:00) Finn Silver x 2	RS X M MR (14:15)	49er Gold x 2 (13:00)	FX Gold x 2 (13:00)	Nacra Gold x 2 (13:00)	
	RC Team		Blue	Green	Yellow		Red	White	
20				Finn Gold x 2 (13:00) Finn Silver x 2	470 W MR (14:15) 470 M MR (15:15)	49er Gold x 2 (13:00)	FX Gold x 2 (13:00)	Nacra Gold x 2 (13:00)	
	RC Team		Yellow	White	Blue	Green	Red	Purple	Pink
21	RC Team				49er Bronze x 2 (16:00)				
	RC Team				FX MR (12:15)				
	RC Team				Purple				
	RC Team				49er MR (13:15)				
	RC Team				Red				
	RC Team				Finn MR (14:15)				
RC Team				Blue					
RC Team				Nacra MR (15:15)					
RC Team				Pink					

ADDENDUM D - FORMAT

Day	Wed	Thu - Fri	Sat	Sun	Mon	Tue	Wed	Thu	Fri	Sat	Sun	Mon	Tue	Wed	Thu	Fri	Sat	Sun
September	3	4, 5	6	7	8	9	10	11*	12	13	14	15	16	17	18	19	20	21
RS:X M			BP	TR	TR	RG / EI	RG / EI	RG / EI	RG / EI	1,2,3	4,5	6,7,8	RD	9,10	11,12	14:15		
RS X W			BP	TR	TR	RG / EI	RG / EI	RG / EI	RG / EI	1,2,3	4,5	6,7,8	RD	9,10	11,12	15:15		
Laser	BP	TR	TR	TR	RG / EI	RG / EI	RG / EI	RG / EI	1,2	3,4	5,6	RD	7,8	9,10	15:15			
Radial	BP	TR	TR	TR	RG / EI	RG / EI	RG / EI	RG / EI	1,2	3,4	5,6	RD	7,8	9,10	14:15			
Finn	BP	TR	TR	TR	TR	TR	TR	RG / EI	RG / EI	RG / EI	RG / EI	1,2	3,4	5,6	RD	7,8	9,10	14:15
470 M	BP	TR	TR	TR	TR	TR	RG / EI	RG / EI	RG / EI	RG / EI	1,2	3,4	5,6	RD	7,8	9,10	15:15	
470 W	BP	TR	TR	TR	TR	TR	RG / EI	RG / EI	RG / EI	RG / EI	1,2	3,4	5,6	RD	7,8	9,10	14:15	
49er					BP	TR	TR	RG / EI	RG / EI	RG / EI	RG / EI	1,2,3	4,5	6,7,8	RD	9,10	11,12	13:15
49er FX					BP	TR	TR	RG / EI	RG / EI	RG / EI	RG / EI	1,2,3	4,5	6,7,8	RD	9,10	11,12	12:15
Nacra 17					BP	TR	TR	RG / EI	RG / EI	RG / EI	RG / EI	1,2,3	4,5	6,7,8	RD	9,10	11,12	15:15

BP	Boat Park Open
TR	Training
EI / RG	Equipment Inspection & Registration
	Qualification series racing days
	Final series racing days
RD	Reserve Day
M	Medal Race starting times
*	Opening Ceremony (time TBA)
**	Price giving after medal races (time TBA)

NOTES:

1. Events with 10 races will have 4 Qualification races and 6 Final races (+ medal)
2. Events with 12 races will have 5 Qualification races and 7 Final races (+ medal)
3. Qualification series is scheduled over 2 days, but may be extended to the next day to ensure completion of the series. Therefore the Final series could be started on the reserve day.

Event	Number of fleets	Gold fleets	Number of Races
Men's Windsurfer	2	50% Maximum 60	13
Women's Windsurfer	2	50% Maximum 40	13
Men's One Person Dinghy	3	33% Maximum 50	11
Women's One Person Dinghy	2	50% Maximum 60	11
Men's One Person Dinghy (Heavyweight)	2	50% Maximum 40	11
Men's Two Person Dinghy	2	50% Maximum 60	11
Women's Two Person Dinghy	2	50% Maximum 40	11
Men's Skiff	2QS / 3FS	25	13
Women's Skiff	2	25	13
Mixed Multihull	2	50% Maximum 40	13

Addendum Q

This addendum has been approved by ISAF in accordance with rule 86.2 and ISAF Regulation 28.1.3.

Version: January 21, 2013

Marginal marks indicate important changes from the previous version.

These sailing instructions change the definition Proper Course, and rules 20, 28.2, 44, 60, 61, 62, 63, 64.1, 65, 66, 70, 78.3 and B5.

Q1 CHANGES TO RACING RULES

Additional changes to rules are made in instructions Q2, Q3, Q4, and Q5.

Q1.1 Changes to the Definitions and the Rules of Part 2 and Part 4

- (a) Add to the definition Proper Course: 'A boat taking a penalty or manoeuvring to take a penalty is not sailing a *proper course*.'
- (b) When rule 20 applies, the following arm signals are required in addition to the hails:
 - (1) for 'Room to tack', repeatedly and clearly pointing to windward; and
 - (2) for 'You tack', repeatedly and clearly pointing at the other boat and waving the arm to windward.

Instruction Q1.1(b) does not apply to boards.

Q1.2 Changes to Rules Involving Protests, Requests for Redress, Penalties and Exoneration

- (a) The first sentence of rule 44.1 is replaced with: 'A boat may take a One-Turn Penalty when she may have broken a rule of Part 2 (except rule 14 when she has caused damage or injury) or rule 31 or 42 while *racing*.'
- (b) For boards, the One-Turn Penalty is one 360° turn with no requirement for a tack or a gybe.
- (c) Rule 60.1 is replaced with 'A boat may protest another boat or request redress provided she complies with instructions Q2.1 and Q2.4.'
- (d) The third sentence of rule 61.1(a) and all of rule 61.1(a)(2) are deleted. Rule B5 is deleted.
- (e) Rules 62.1(a), (b) and (d) are deleted. In a race where this addendum applies, there shall be no scoring adjustments for redress given under any of these rules for a previous race.
- (f) Rule 64.1(a) is changed so that the provision for exonerating a boat may be applied by the umpires without a hearing, and it takes precedence over any conflicting instruction of this addendum.
- (g) Rules P1 to P4 shall not apply.

Q2 PROTESTS AND REQUESTS FOR REDRESS BY BOATS

Q2.1 While racing, a boat may protest another boat under a rule of Part 2 (except rule 14) or under rule 31 or 42; however, a boat may only protest under a rule of Part 2 for an incident in which she was involved. To do so she shall hail 'Protest' and conspicuously display a red flag at the first reasonable opportunity for each. She shall remove the flag before, or at the first reasonable opportunity after a boat involved in the incident has taken a penalty voluntarily or after an umpire's decision. However, a board need not display a red flag.

Q2.2 A boat that protests as provided in instruction Q2.1 is not entitled to a hearing. Instead, a boat involved in the incident may acknowledge breaking a rule by taking a One-Turn Penalty as described in rule 44.2. If the protested boat does not take a penalty voluntarily, an umpire will decide whether to penalize any boat and signal the decision as provided in instruction Q3.1.

Q2.3 At the finishing line, the race committee will inform the competitors about each boat's finishing place or scoring abbreviation. After this has been done for all boats, the race committee will promptly display flag B with one sound. Two minutes later flag B will be removed with one sound.

Q2.4 A boat intending to

- (a) protest another boat under a rule other than instruction Q3.2 or Q4.2(a), or a rule listed in instruction Q2.1,
- (b) protest another boat under rule 14 if there was contact that caused damage or injury, or
- (c) request redress

shall hail the race committee before or during the display of flag B. The same time limit applies to protests under instructions Q5.4 and Q5.5. The protest committee may extend the time limit if there is good reason to do so.

Q2.5 The race committee will promptly inform the protest committee about any protests or requests for redress made under instruction Q2.4.

Q3 UMPIRE SIGNALS AND IMPOSED PENALTIES

Q3.1 An umpire will signal a decision as follows:

- (a) A green and white flag with one long sound means 'No penalty.'
- (b) A red flag with one long sound means 'A penalty is imposed or remains outstanding.' The umpire will hail or signal to identify each such boat.
- (c) A black flag with one long sound means 'A boat is disqualified.' The umpire will hail or signal to identify the boat disqualified.

Q3.2 (a) A boat penalized under instruction Q3.1(b) shall take a One-Turn Penalty as described in rule 44.2.

(b) A boat disqualified under instruction Q3.1(c) shall promptly leave the course area.

Q4 PENALTIES AND PROTESTS INITIATED BY AN UMPIRE; ROUNDING OR PASSING MARKS

Q4.1 When a boat

- (a) breaks rule 31 and does not take a penalty,
- (b) breaks rule 42,
- (c) gains an advantage despite taking a penalty,
- (d) deliberately breaks a rule,
- (e) commits a breach of sportsmanship, or
- (f) fails to comply with instruction Q3.2 or to take a penalty when required to do so by an umpire,

an umpire may penalize her without a protest by another boat. The umpire may impose one or more One-Turn Penalties to be taken as described in rule 44.2, each signalled in accordance with instruction Q3.1(b), or disqualify her under instruction Q3.1(c), or report the incident to the protest committee for further action. If a boat is penalized under

instruction Q4.1(f) for not taking a penalty or taking a penalty incorrectly, the original penalty is cancelled.

- Q4.2** (a) A boat shall not round or pass a mark on the wrong side. If she does so, she may correct her error as provided in rule 28.2 only if she does so before she rounds or passes the next mark or finishes.
- (b) When a boat breaks instruction Q4.2(a) and fails to correct her error before rounding or passing the next mark or finishing, an umpire may disqualify her under instruction Q3.1(c).

Q4.3 An umpire who decides, based on his own observation or a report received from any source, that a boat may have broken a rule, other than instruction Q3.2 or Q4.2(a) or a rule listed in instruction Q2.1, may inform the protest committee for its action under rule 60.3. However, he will not inform the protest committee of an alleged breach of rule 14 unless there is damage or injury.

Q5 PROTESTS; REQUESTS FOR REDRESS OR REOPENING; APPEALS; OTHER PROCEEDINGS

Q5.1 No proceedings of any kind may be taken in relation to any action or non-action by an umpire.

Q5.2 A boat may not base an appeal on an alleged improper action, omission or decision of the umpires or the protest committee. In rule 66 the third sentence is changed to 'A *party* to the hearing may not ask for a reopening.'

- Q5.3** (a) Protests and requests for redress need not be in writing.
- (b) The protest committee may take evidence and conduct the hearing in any way it considers appropriate and may communicate its decision orally.
- (c) If the protest committee decides that a breach of a rule has had no effect on the outcome of the race, it may impose a penalty of points or fraction of points or make another arrangement it decides is equitable, which may be to impose no penalty.

Q5.4 The race committee will not protest a boat, except following a report under rule 43.1(c) or 78.3.

Q5.5 The protest committee may protest a boat under rule 60.3. However, it will not protest a boat for breaking instruction Q3.2 or Q4.2(a), a rule listed in instruction Q2.1, or rule 14 unless there is damage or injury.